

# PPS Climate Crisis Response Committee

2023 - 2024 Orientation



PORTLAND  
Public Schools

August 21,  
2023

# Agenda

---

## Policy Passed March 2022

**PPS Commits to swiftly mobilize resources for climate action to:**

- Introductions
- Brief History of the Policy
- Progress to date
- 23-24 Projected Scope of Work
- Defining the CCRC Audience & Student Empowerment Pathways
- Co-Create the CCRC 23-24 Goals
- Wrap Up - Upcoming Dates

# Brief History

---

## Climate Action at PPS

### Students, Teachers, and Community pushing the bar at PPS

- History of emissions reduction in transportation and energy for decades
- Climate Literacy Resolution - 2016
- Youth Climate Strike - 2019
- Climate Justice High School elective designed summer 2020
- Community proposes the first draft of the climate policy - community, Board members, staff, teachers, and students collaborate on 25+ revisions
- Policy adopted March 1, 2022

# Context

---

## Policy Passed March 2022

**PPS Commits to swiftly mobilize resources for climate action to:**

- Reducing greenhouse gas (GHG) emissions and minimizing other negative environmental impacts;
- improving our school communities' health and wellness; and
- building a culture of learning, responsibility, and sustainability centered on our values of racial equity and climate justice.
- educate and empower students as leaders in the just transition to a sustainable city and restorative society.

# Decarbonization Commitment

---

## Policy Commitments:

- 2030: Reduce Emissions by 50% of 2018-2019 baseline
- 2040: Reach Net Zero GHG Emissions
- 2050: Phase out all fossil fuel infrastructure and equipment in new construction and existing buildings



# Climate Justice

---

The Policy states:

*Climate change disproportionately impacts the vulnerable members of our community. Implementation of this policy will prioritize serving people with disabilities, communities of color, and other vulnerable populations.*

## **Advancing the Graduate Portrait**

- Transformative Racial Equity Leaders
- Influential and Informed Global Stewards
- Optimistic and Future-Oriented Graduates





# CCRP: So much to learn about, so much to do!

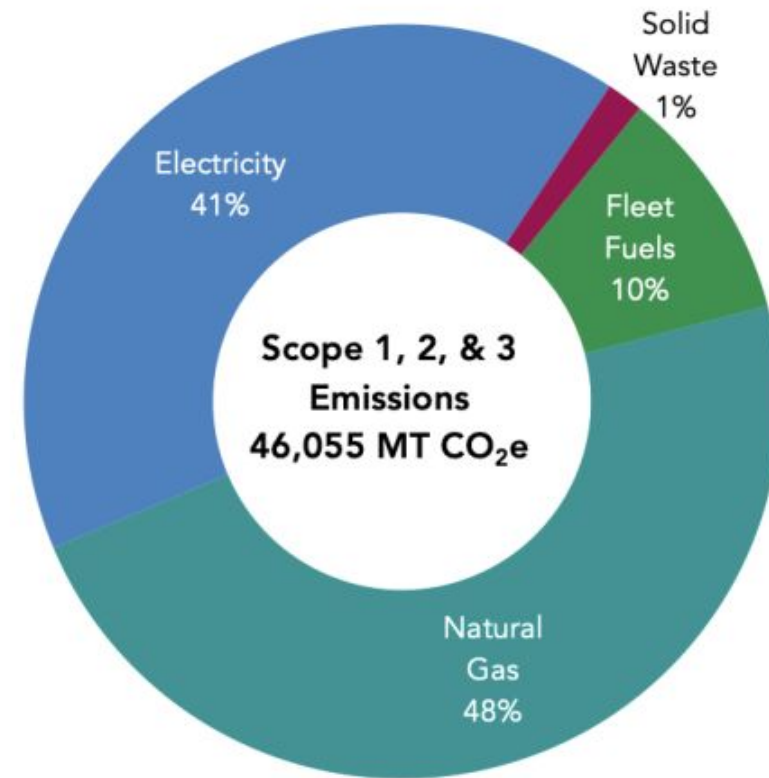
We believe students can ground themselves through action and learning, and we have lots of ways to do that through the CCRP.



# School Buildings and Energy



- PPS will reduce its greenhouse gas emissions by 50 percent by 2030, using the 2018-2019 school year baseline, and reach net zero emissions by 2040.





# Recycling & Food Scraps



Goal 1.2: PPS will maximize reductions in GreenHouse Gas emissions from district operations, maintenance, and facilities management.

- Establish standardized systems for waste prevention practices, including recycling and food waste reduction at campuses.
- Minimize disposable materials.

On the Ground:

- PPS kitchens are required to collect their food scraps. These scraps are sent to a composting facility or turned into energy. BUT, the teachers and students are not currently required.
- Food waste collection and recycling are “gateway” climate actions that can create great stewards of our planet.
- Launching standardized waste bin pilot with organics collection in cafeteria at three schools
- Currently, partners like Eco Schools Network help promote waste reduction and reuse

# Outdoor Education & Green Schoolyards



Goal 1.3: PPS will maximize the carbon sequestration potential and other environmental benefits of green school yards and increase the ability of school grounds to adapt to climate extremes.

- Increase shade trees, green spaces, and de-pave projects, with highest priority in low-canopy neighborhoods.
- Maximize onsite stormwater management in compliance with city code.
- Establish green school yard plans to care for school grounds.
- Phase out gas-powered equipment used for grounds maintenance.

Goal 3.3.3 - Treat the grounds and garden of each school as a learning space and involve students in nature-based grounds improvements and design. Support opportunities for students in every PPS elementary school to learn in a designated outdoor learning space.

On the Ground:

- Finalize Green Schoolyard Inventory
- Continued depave projects





# Transportation



Goal 1.4: PPS will minimize greenhouse gas emissions from student and staff transportation, including transitioning to electric or low-emission vehicles.

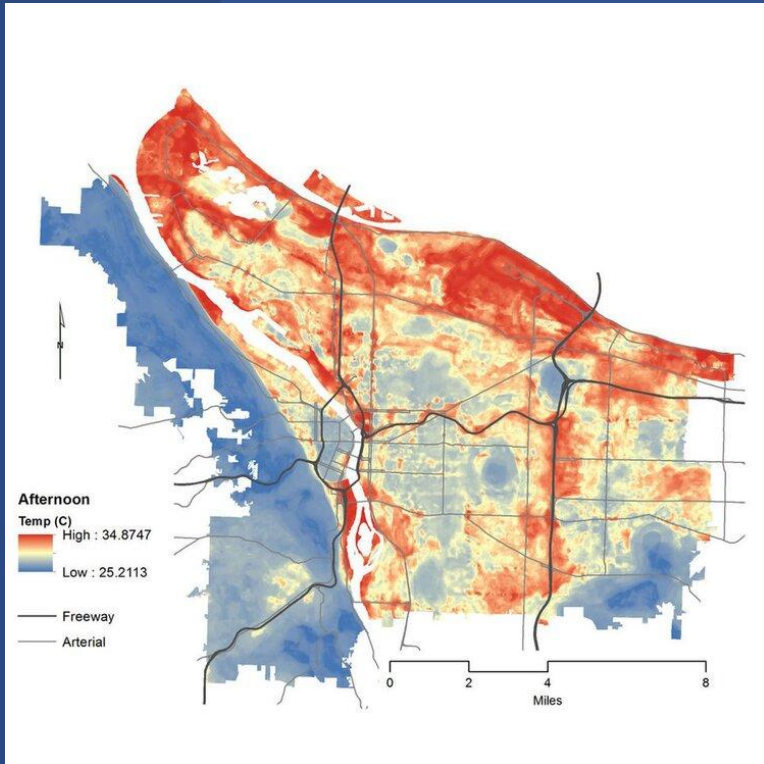
- Support staff and students to walk, bike, bus or telecommute, in order to reduce single-occupant car commuting.
- Transition PPS and contracted vehicle fleet to electric or low emissions or renewable fuels.
- Educate and communicate to students, parents and staff about benefits of and opportunities to reduce single-occupant car commuting and idling.

On the ground:

- PPS now has THREE electric buses!
- Expanded HS Tri-Met Pass through the summer
- Safe Routes to School programs.
  - Multiple schools, such as Alameda and James John Elementary, have started “bike buses” to school. SRTS program expanding this year.



# Climate Resiliency



## Pillar 2: Improve Health & Wellness

Goal 2.1: PPS will address climate-based impacts on health, safety, and wellness of its students and employees

- support students and families during climate-related events and natural disasters, such as wildfires, flooding, drought, heat waves, extreme winter storms, extreme wind events.

Goal 2.2: PPS will support frontline student communities to build resilience from climate change induced stresses and support preparation for and recovery from these events.

- make available its facilities, as appropriate, during community response efforts to climate events.
- incorporate climate justice priorities and climate resiliency design to inform long-term facility planning.

On the Ground:

- Continued work on extreme heat plan and heat mitigation

# Food



## Goal 2.1: Continued

- Where possible, prioritize foods that are local, organic, seasonal, plant-based, minimally processed and/or minimally packaged, while meeting requirements of the USDA Child Nutrition Programs.”

## On the Ground

- Expanded FoodCorps partnerships
- Continued support of tracking and emphasizing local, plant-based food

# Empower Staff & Teachers as Climate Champions



## Pillar 3: Provide Effective Environmental and Sustainability Education

Goal 3.1: PPS will empower staff as allies for a healthy climate.

- Provide learning opportunities for staff on climate science/climate justice.
- Continuously collaborate with staff to utilize sustainability practices in the performance of their work and provide information, support, and tools to help implement those practices.

### On the Ground

- Launch of School Sustainability Champions
- June Climate Justice Professional Development - launching resource site



# Climate Justice Education



Goal 3.2: With guidance from frontline students and communities, PPS will develop curricular learning opportunities, so PPS graduates know the causes and consequences of climate change, understand climate justice, and have opportunities to practice climate solutions.

- Develop and deliver curriculum and resources to help students understand, prepare for, and respond to climate change impacts.

## On the Ground

- Multiple PPS high schools have a climate justice elective course.
- Engagement to co-create student leadership pathways
- Supporting student activism through excused absences
- Climate justice curriculum mapping

# Project-Based, Community-Based Solutions



Goal 3.3: PPS staff will collaborate with students to create opportunities to engage youth in hands-on climate learning, preparation, and practice on a regular basis at all PPS schools.

## On the Ground

- PPS staff are working to create a list of local climate organizations that are excited and open to working with students on projects.
- PPS hosted a Spring Student Climate Summit to involve students in climate action at the district and community level.

# Priority Areas

---

## High Level Approach

- 2022 - 2023:
  - Identify stakeholders and existing scopes of work
  - understand history of activities
  - Identify existing data and gaps in data tracking tools
- 2023 - 2024:
  - Develop data tracking mechanisms to fill gaps
  - Finalize short term and long term goals
  - Engage communities in defining goals
  - Develop communication & reporting processes



# Priority Areas

---

## 23-24 Projected Scopes of Work

- Develop Engagement Pathways Plan  
Define pathways and goals for student empowerment, engagement, and education; community & teacher support systems; systemic barriers
- Green Schoolyard  
Finalize inventory, Define "green schoolyard" and "outdoor learning"; set of requirements and tiers; establish a baseline and goals
- Decarbonization Roadmap  
Identify pathway to decarbonization goals centered on climate resilience, health and curriculum

# Priority Areas

---

## 23-24 Projected Scopes of Work

- Finalize evaluation plan  
Define metrics and research best practices to inform goals; create surveys and data tracking tools
- Grants Tracking and Coordination  
Track and strategically plan for PCEF CIP, Federal IRA funding, EPA EV grant, PDAL outdoor learning grant, and other opportunities
- Robust Communications Plan





# Policy Activities Dashboard Example



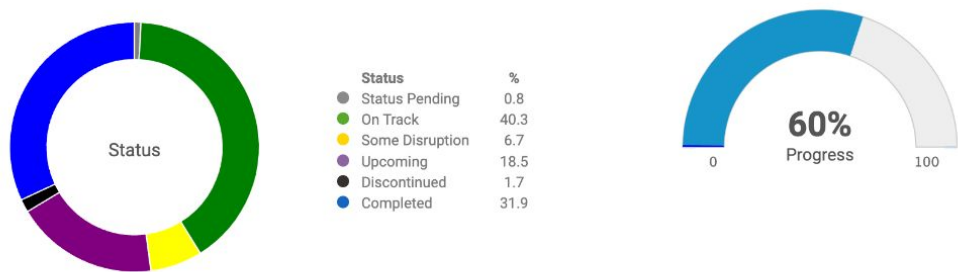
Racial Equity and Social Justice ▾ Inclusive and Differentiated Learning for Every Child ▾ Professional Excellence and Support ▾ Embracing Change ▾

## 2021-2025 Strategic Plan for Racial Equity, Inclusion, and Excellence

In May 2019, PPS adopted our community-informed vision, **Portland Public Schools reimagined**. This vision, which serves as a map toward a shared “north star,” charts our community’s long-term aspirations for our graduates, educators, and the overall school system. It is also our promise to students, their families, and our community about the future of public education in our city.

**Forward Together: PPS’s 2021–2025 Strategic Plan for Racial Equity, Inclusion and Excellence** is the first of a series of multi-year strategic plans for the district, outlining this important step toward realizing our vision.

On this dashboard, you will see the progress on each of the collective and coherent actions and goals that together represent the changes we believe will get us closer to bringing our vision to life. This report does not reflect the day-to-day operational work the district is doing to maintain our core functions and services.



Racial Equity and Social Justice

**Racial Equity and Social Justice**

As a community, we have an urgency to intentionally disrupt systems of oppression, because they are closely tied to disparities of access and educational outcomes, and to the health and well-being of our students and staff.

Inclusive and Differentiated Learning for Every Child

**Inclusive and Differentiated Learning for Every Child**

We celebrate the diversity of our students, and are working to provide differentiated learning experiences and supports that meet every child where they are, work with their families, and ensure every child has the opportunity to thrive.

Professional Excellence and Support

**Professional Excellence and Support**

To become a world-class school district, we must hire talented people from diverse backgrounds and experiences. We also know that our world-class staff are the heart of our district, and we must support them in their work.

Embracing Change

**Embracing Change**

We need to create and support a culture open to positive change—as a system. The way we solve problems systematically, the way we build a culture and approach to change, the way we build a culture and approach to change.

# Policy Activities Dashboard Example

## Climate Action Plan

This Climate Action Plan includes an implementation framework designed to achieve community-wide goals for greenhouse gas reduction and climate adaptation and resilience. The plan is structured around a unifying framework organized by nine community-wide sectors.

### Plan Sectors

Click the photo of each of the nine plan sectors below to view the progress.



#### Cross-Cutting Actions

This section includes foundational recommendations which apply to multiple Sectors. The following actions support the long-range implementation of the CAP including: Building Internal Capacity, External Support, and Funding.



#### Transportation and Land Use

Equipment and transport systems have significant impacts on the environment, accounting globally for 20% to 25% of world energy consumption and carbon dioxide emissions.



#### Buildings and Energy

Building energy use is a major contributor to greenhouse gas (GHG) emissions. The Building Energy sector includes all residential, commercial, and industrial buildings.





# Discussion: Climate Crisis Response Committee Engagement, Student Support, and 23-24 Goals





# CCRC Meeting Schedule

---

## 23-24 Committee Meetings

- September 21, 2023 - 6:00 pm - 7:30 pm
- November 9, 2023 - 6:00 pm - 7:30 pm
- February 1, 2023 - 5:30 pm - 7:00 pm
- April 4, 2023 - 5:30 pm - 7:00 pm
- May 23, 2023 - 5:30 pm - 7:00 pm

Opportunity to transition committee chair if anyone is interested.